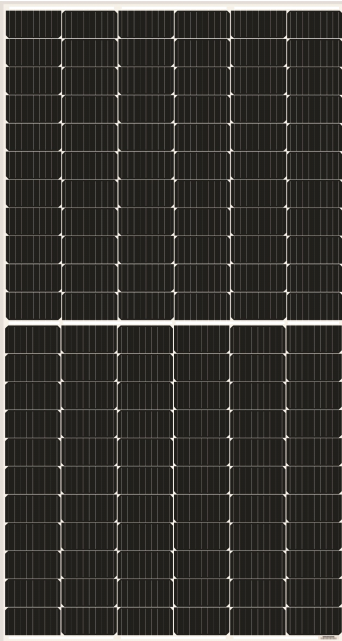




ADVANCED PERFORMANCE & PROVEN ADVANTAGES



- High module conversion efficiency up to 21.23% by using innovative Half-cell design and Multi-busbar(MBB) cell technology.
- Low temperature coefficient and excellent performance under high temperature and low light conditions.
- Robust aluminum frame ensures the modules to withstand wind loads up to 2400Pa and snow loads up to 5400Pa.
- High reliability against extreme environmental conditions (passing salt mist, ammonia and hail tests).
- Potential induced degradation (PID) resistance.

CERTIFICATIONS

- IEC 61215, IEC 61730, CE
- ISO 9001:2015: Quality management system
- ISO 14001:2015: Environmental management system
- ISO 45001:2018: Occupational health and safety management system

SPECIAL WARRANTY

- 12 years product warranty
- 30 years linear power output warranty



LOW RISK BRITISH
PROCUREMENT



BRITISH TECHNICAL
SUPPORT



ALWAYS GRADE
"A" CELLS



BRITISH QUALITY
STANDARDS



ELECTRICAL CHARACTERISTICS AT STC

Maximum Power (P_{max})	480W	485W	490W	495W	500W	505W
Open Circuit Voltage (V_{OC})	45.0V	45.2V	45.4V	45.6V	45.8V	46.0V
Short Circuit Current (I_{SC})	13.64A	13.69A	13.74A	13.79A	13.84A	13.89A
Voltage at Maximum Power (V_{mp})	37.6V	37.8V	38.0V	38.2V	38.4V	38.6V
Current at Maximum Power (I_{mp})	12.77A	12.84A	12.90A	12.96A	13.03A	13.09A
Module Efficiency (%)	20.18	20.39	20.60	20.81	21.02	21.23
Operating Temperature	-40°C to +85°C					
Maximum System Voltage	1000V DC/1500V DC					
Fire Resistance Rating	Type 1(in accordance with UL1703)/Class C(IEC61730)					
Maximum Series Fuse Rating	25A					

STC: Irradiance 1000W/m², Cell temperature 25°C, AM1.5; Tolerance of P_{max}: ±3%; Measurement Tolerance: ±3%

ELECTRICAL CHARACTERISTICS AT NOCT

Maximum Power (P_{max})	360W	364W	368W	372W	376W	380W
Open Circuit Voltage (V_{OC})	41.4V	41.6V	41.8V	42.0V	42.2V	42.4V
Short Circuit Current (I_{SC})	11.05A	11.09A	11.13A	11.17A	11.21A	11.25A
Voltage at Maximum Power (V_{mp})	34.2V	34.4V	34.6V	34.8V	35.0V	35.2V
Current at Maximum Power (I_{mp})	10.53A	10.59A	10.64A	10.69A	10.75A	10.80A

NOCT: Irradiance 800W/m², Ambient temperature 20°C, Wind Speed 1 m/s

MECHANICAL CHARACTERISTICS

Cell type	Monocrystalline PERC 182*91mm
Number of cells	132 (6x22)
Module dimensions	2098x1134x35mm (82.60x44.65x1.38inches)
Weight	26.5kg (58.4lbs)
Front cover	3.2mm (0.13inches) tempered glass with AR coating
Frame	Anodized aluminum alloy
Junction box	IP68, 3 diodes
Cable	4mm ² (0.006inches ²), Portrait: 300mm (11.81inches); Landscape: 1300mm (51.18inches)
Connector	MC4 or MC4 compatible

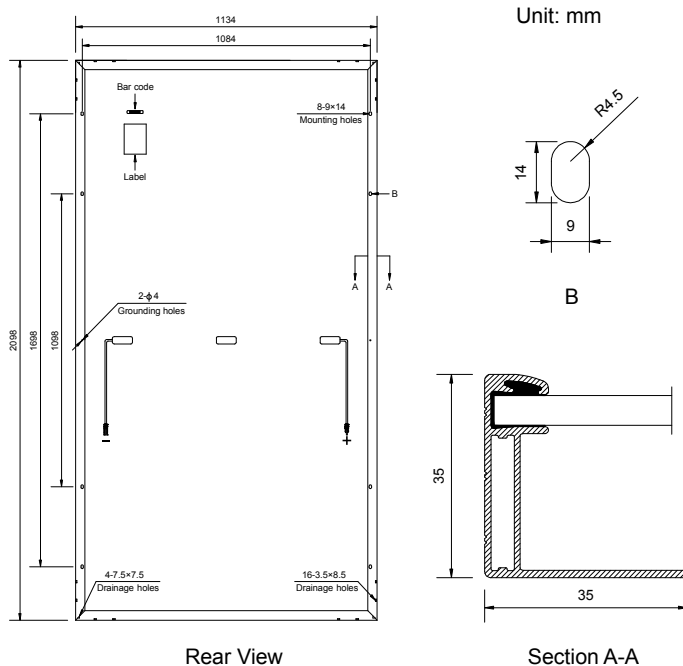
TEMPERATURE CHARACTERISTICS

Nominal Operating Cell Temperature (NOCT)	43°C±2°C
Temperature Coefficients of P_{max}	-0.36%/°C
Temperature Coefficients of V_{OC}	-0.28%/°C
Temperature Coefficients of I_{SC}	0.05%/°C

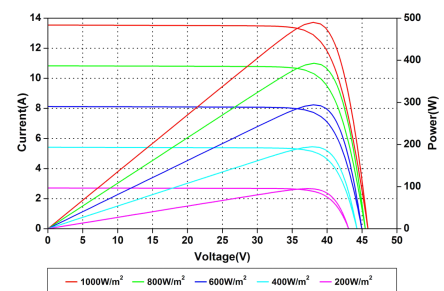
PACKAGING

Standard packaging	31pcs/pallet
Module quantity per 20' container	155pcs
Module quantity per 40' container	682pcs (HQ)

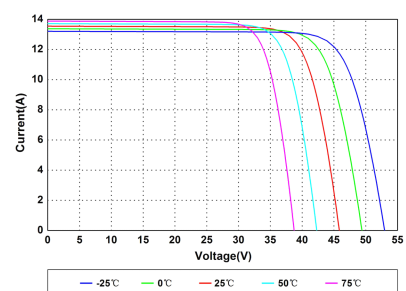
ENGINEERING DRAWINGS



IV CURVES



Current-Voltage and Power-Voltage Curves at Different Irradiances



Current-Voltage Curves at Different Temperatures

Specifications in this datasheet are subject to change without prior notice.

+44 (0)1753 910327 | info@uksol.uk | www.uksol.uk | WhatsApp: +44 (0)7949 489911

UKSOL and the UKSOL logo are registered trademarks of UKSOL Ltd.